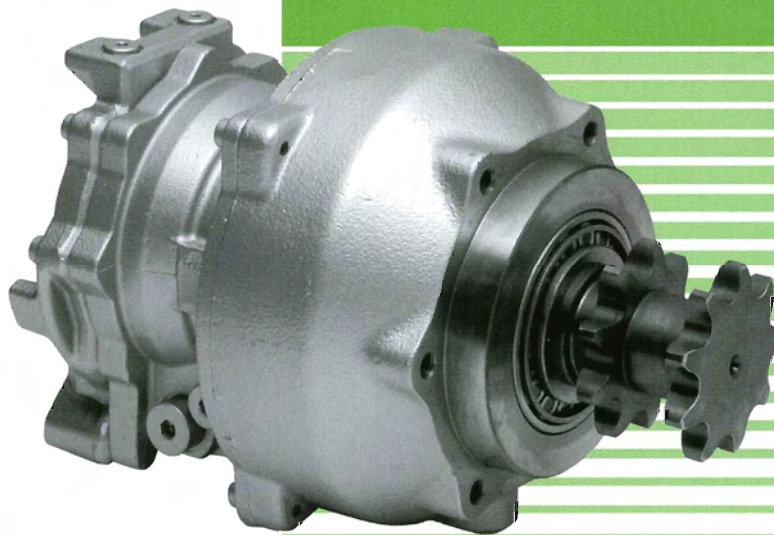


# KYB

H Y D R A U L I C S  
H Y D R A U L I C S  
H Y D R A U L I C S  
H Y D R A U L I C S  
H Y D R A U L I C S  
H Y D R A U L I C S  
H Y D R A U L I C S  
H Y D R A U L I C S

## HYDRAULIC PISTON MOTOR FOR SKID STEER LOADER

# MS-50VP-220



### FEATURES

Well hydraulically balanced motor ensures compactness and high performance.

Two speed function is available. It is able to select motor displacement in order to get demanded torque and speed by external pilot pressure. Thanking to two speed function; pump displacement will be able to be reduced compared with fixed displacement motor.

An off set type two speed design ensures reliable changeover of the displacement by external pilot control.

Output shaft which is combined with chain sprocket and one stage planetary gear box allows to shorten the total length.

The accuracy, simple planetary gearbox structure makes it ideal for reliability and durability.

Gear box is lubricated with hydraulic motor drain oil eliminating needs for gear oil.

MS motor has parking brake which capacity is the same as hydraulic output torque.

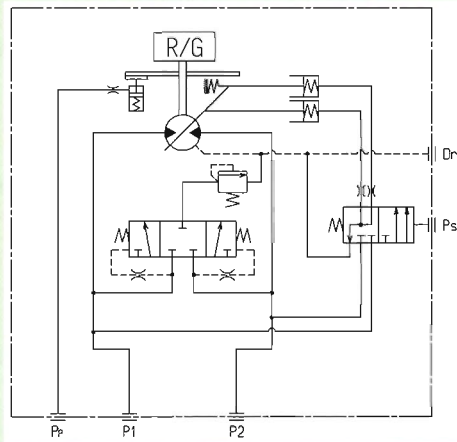
MS motor has flushing circuit to drain high temperature oil to prevent over heat of hydraulic oil.

**KAYABA INDUSTRY CO., LTD.**

## SPECIFICATIONS

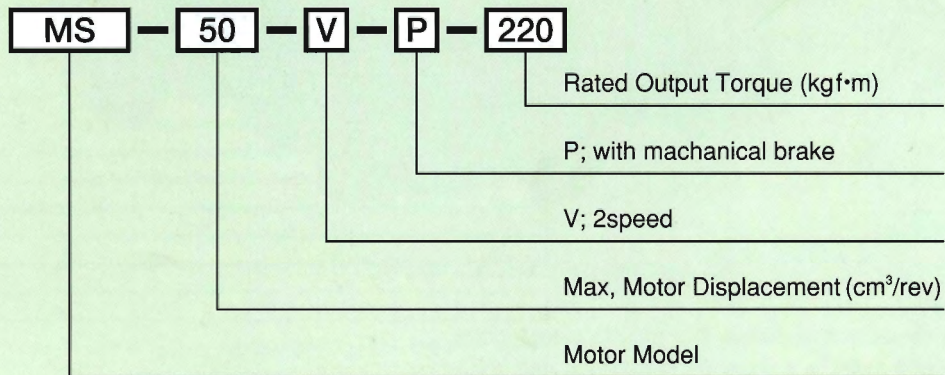
Model	Total Displacement	Max. Pressure	Max. Speed	Weight
	cm <sup>3</sup> /rev	MPa	rpm	kg
MS-50VP-220	445 / 281	36.8	420	60

## HYDRAULIC CIRCUIT



## PISTON MOTOR FOR SKID STEER LOADER **MS-50VP-220**

### MODEL INFORMATION



## KAYABA INDUSTRY CO., LTD.

[www.kyb.co.jp](http://www.kyb.co.jp)

HEAD OFFICE: WORLD TRADE CENTER BLDG.,  
4-1, HAMAMATSU-CHO 2-CHOME,  
MINATO-KU, TOKYO 105-6111 JAPAN  
TELEPHONE 81-3-3435-3581  
TELEFAX 81-3-3436-2908

U.S.A. OFFICE: **KYB AMERICA LLC**  
140 NORTH MITCHELL CT.,  
ADDISON, IL60101, U.S.A.  
TELEPHONE 1-630-620-5555  
TELEFAX 1-630-620-8133  
[www.kyb.com](http://www.kyb.com)

EUROPE OFFICE: **KAYABA INDUSTRY CO., LTD.**  
**EUROPE BRANCH**  
KIMPLER STRASSE 336,  
D-47807 KREFELD, F. R. GERMANY  
TELEPHONE 49-2151-93143-50  
TELEFAX 49-2151-93143-30