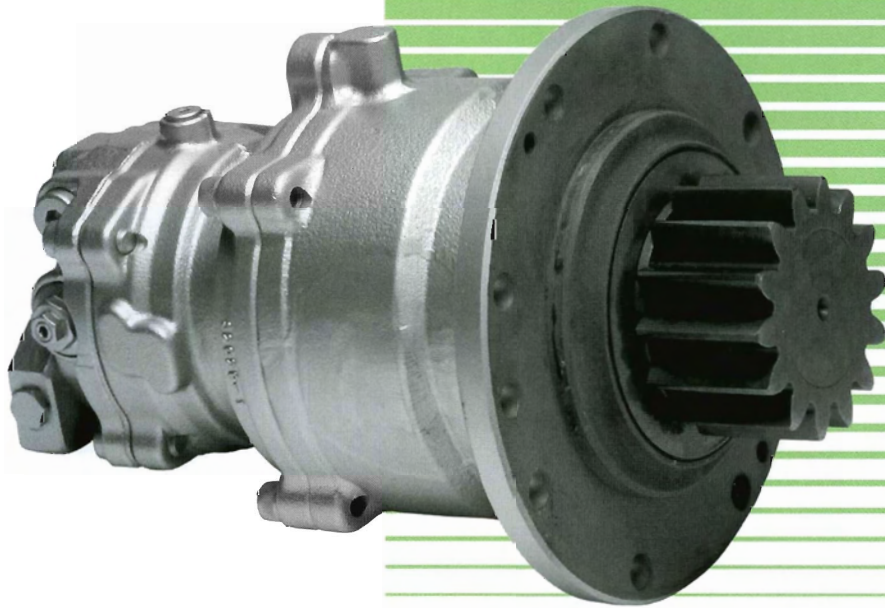


KYB

H Y D R A U L I C S
H Y D R A U L I C S
H Y D R A U L I C S
H Y D R A U L I C S
H Y D R A U L I C S
H Y D R A U L I C S
H Y D R A U L I C S
H Y D R A U L I C S
H Y D R A U L I C S

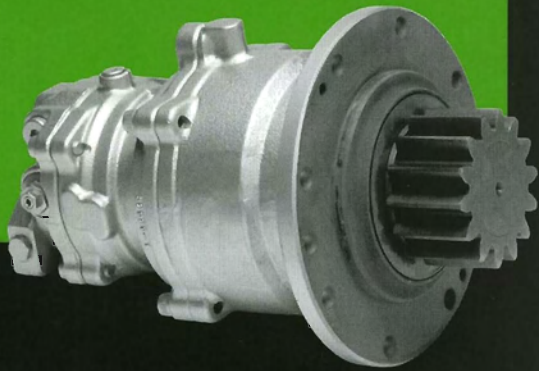
HYDRAULIC PISTON MOTOR

MSG SERIES



KAYABA INDUSTRY CO., LTD.

PISTON MOTOR MSG SERIES



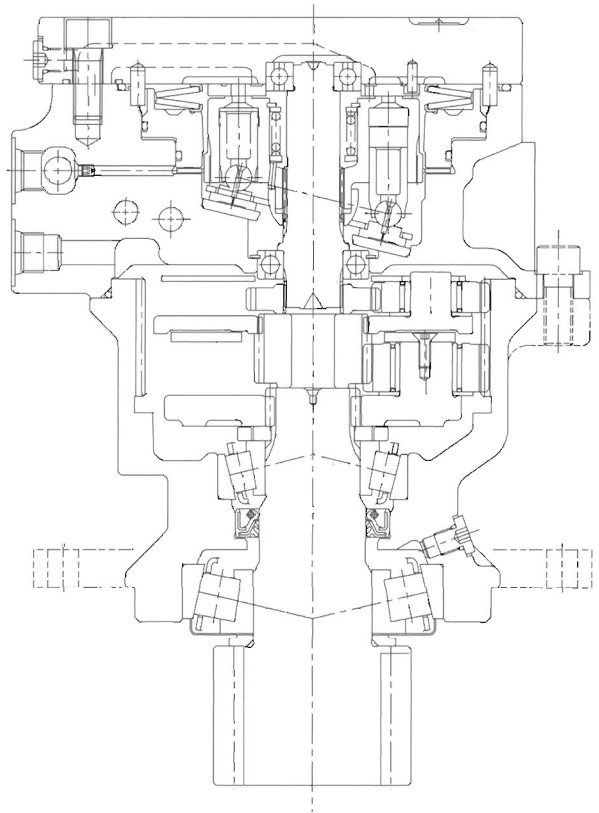
GENERAL

MSG is a piston motor with a speed reducer designed for small construction vehicles (mini excavators).

Compactly it incorporates various options (parking brake, high-pressure relief valve, make-up valve, anti swingback valve, etc.) for whirling round.

FEATURES

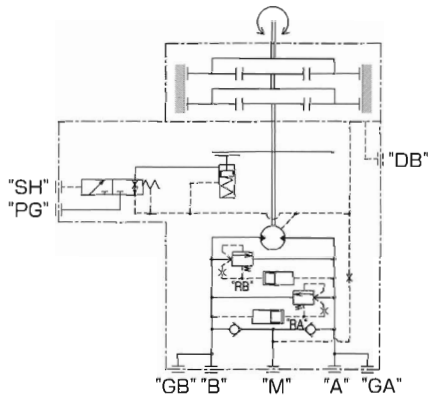
1. Hydraulically balanced motor ensures high-performance for a long time.
2. Relief valve with shock-absorb function and make-up valve are appropriately integrated to shorten total length
3. Parking brake are equipped as standard
4. Delay valve of parking brake is available (option)
5. Anti swingback valve is available (option)
6. The speed reducer is lubricated with motor drain oil (motor hydraulic oil) eliminating needs for gear oil.



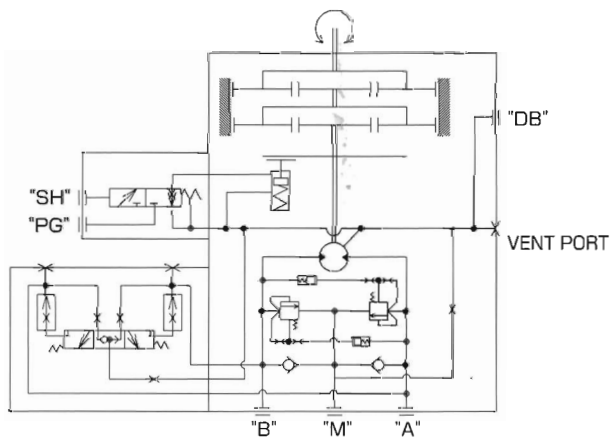
MSG-27P-16E

SPECIFICATIONS

Model	Max. Output Torque (Theoretical)	Total Displacement	Motor Displacement	Gear Ratio	Max. Speed	Max. Motor Speed	Max. Flow	Max. Pressure	Mechanical Brake Torque
	N-m	cm ³ /rev	cm ³ /rev		rpm	rpm	L/min	MPa	N-m
MSG-21P-11E	600	133 ~ 226	12.7 ~ 21.5	10.50	80	1400	18	16.7	580
MSG-27P-10E	830	205 ~ 271	20.7 ~ 27.4	9.90	90	1700	25	20.6	850
MSG-27P-16E	1270	321 ~ 424		15.51	85		35		1270
MSG-27P-18E	1270	380 ~ 502		18.35	85		43		1270
MSG-27P-23E	2040	471 ~ 622		22.74	70		44		2040
MSG-44P-21	3480	673 ~ 909	32.7 ~ 44.1	20.61	85	1700	77	24.0	3480



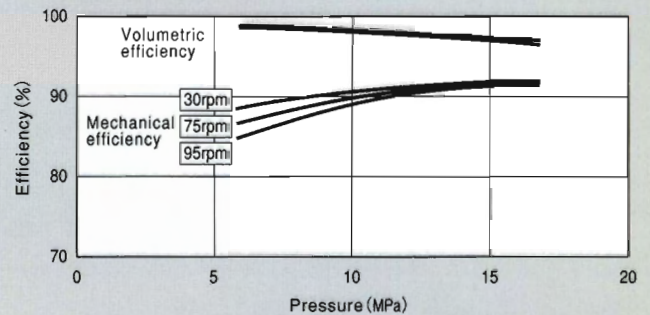
MSG-21P
MSG-27P



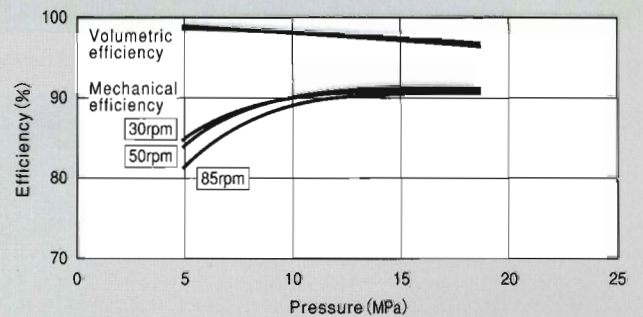
MSG-44P-21

PERFORMANCE CURVE

MSG-21P-11E



MSG-27P-10E



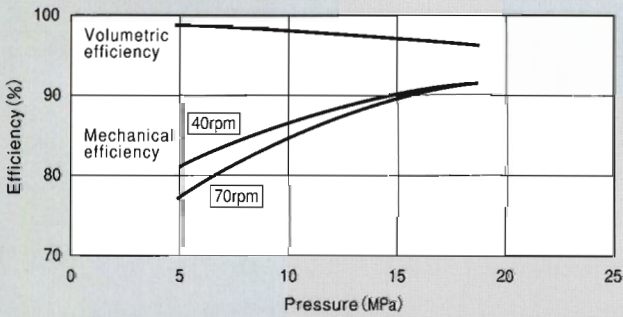
▲ Option
× Not available

Anti Swing back valve	Output pinion (example)		Weight	Applicable Vehicle Weight
	Module	Number	Kg	Ton
×	5	11	19	~2.5
▲	5	11	34	~3.5
▲	6	11	38	~4.0
▲	6	11	38	~4.5
▲	7	11	44	~5.5
▲	8	12	85	~8.0

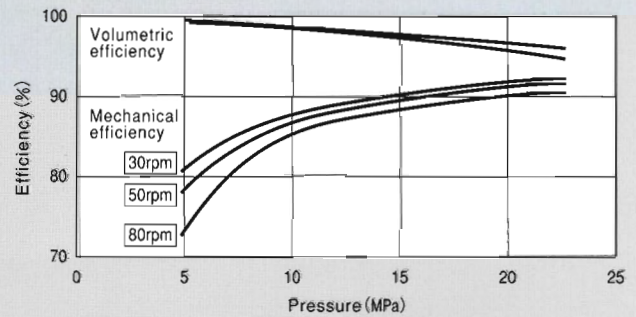
note:1) Pressure is restricted the max output torque.

note:2) The module of output pinion indicated to the table and the number of teeth are example.

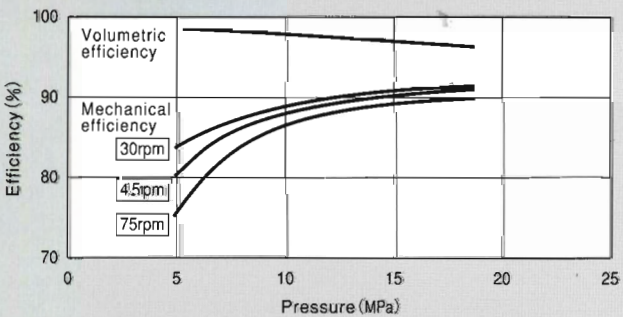
MSG-27P-16E



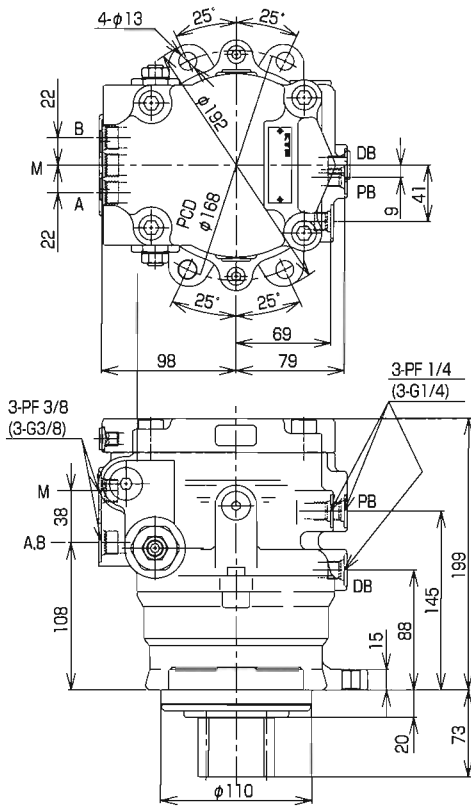
MSG-44P-21



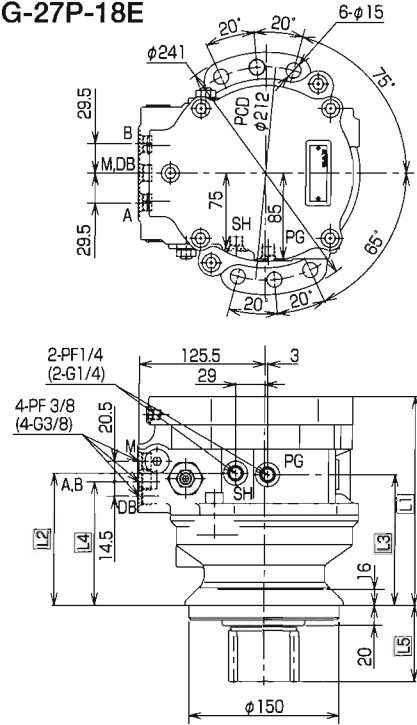
MSG-27P-23E



MSG-21P-11E

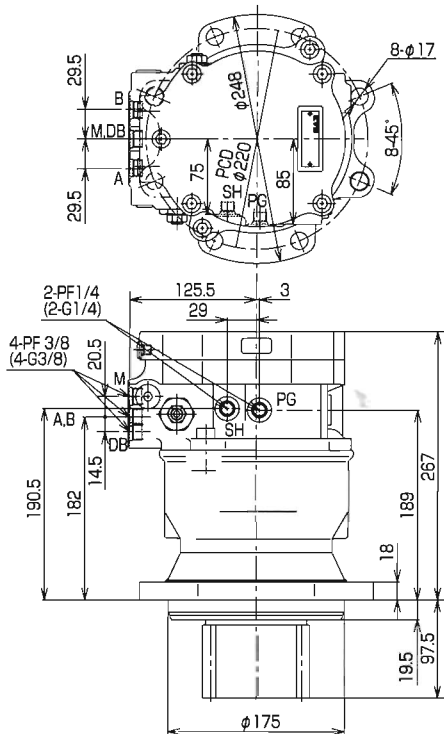


**MSG-27P-10E
MSG-27P-16E
MSG-27P-18E**

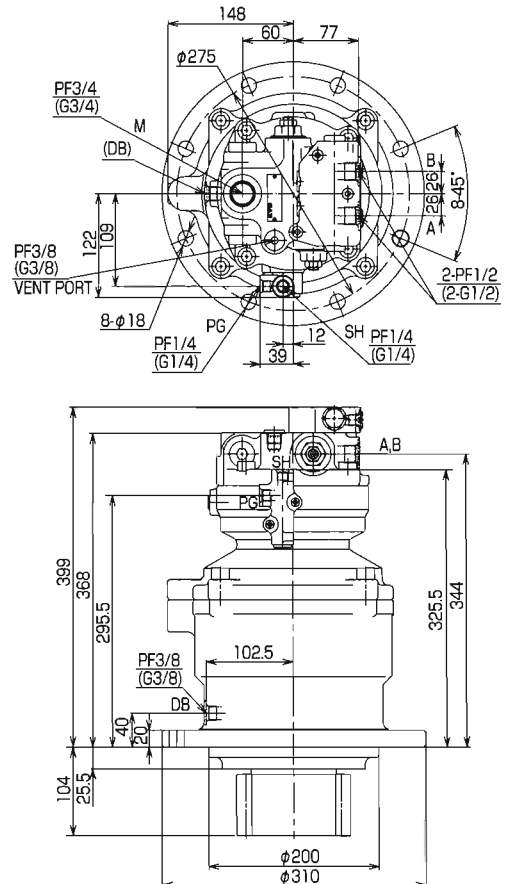


Model	L1	L2	L3	L4	L5
MSG-27P-10E	208	131.5	130	123	76
MSG-27P-16E	240	163.5	162	155	83
MSG-27P-18E					

MSG-27P-23E



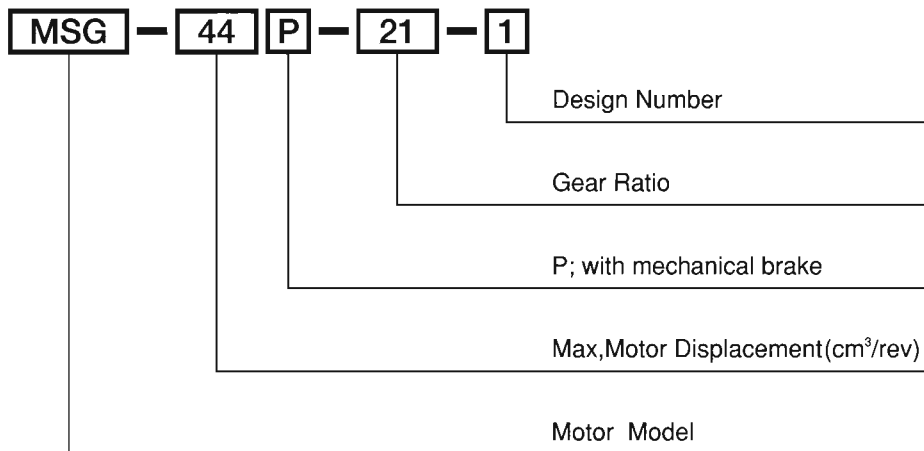
MSG-44P-21





PISTON MOTOR MSG SERIES

MODEL INFORMATION



KAYABA INDUSTRY CO., LTD.

HEAD OFFICE: WORLD TRADE CENTER BLDG.,
4-1, HAMAMATSU-CHO 2-CHOME,
MINATO-KU, TOKYO 105-6111 JAPAN
TELEPHONE 81-3-3435-3581
TELEFAX 81-3-3436-2908

U.S.A.OFFICE: **KYB AMERICA LLC**
140 NORTH MITCHELL CT.,
ADDISON, IL60101, U.S.A.
TELEPHONE 1-630-620-5555
TELEFAX 1-630-620-8133
www.kyb.com

www.kyb.co.jp

EUROPE OFFICE: **KAYABA INDUSTRY CO., LTD.**
EUROPE BRANCH
KIMPLER STRASSE 336,
D-47807 KREFELD, F. R. GERMANY
TELEPHONE 49-2151-93143-50
TELEFAX 49-2151-93143-30